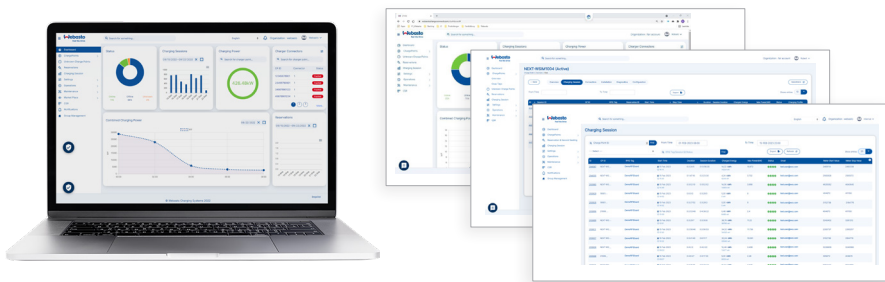


# Webasto ChargeConnect

The ideal digital addition to the Webasto charging station

**Make full use of the advantages of Webasto ChargeConnect – this not only makes managing and controlling your charging infrastructure much easier but it is also a lot of fun. Always keep track of your Webasto charging stations.**

With Webasto ChargeConnect, you can access the current status of your charging stations, the entire charging history, your energy consumption, and much more at any time and from anywhere. The data from your charging stations is reflected in the Webasto ChargeConnect portal and app, offering maximum transparency, control, and security. This makes Webasto ChargeConnect and the Webasto charging station the perfect tandem for an outstanding charging experience.



## Webasto ChargeConnect Portal

The digital web interface

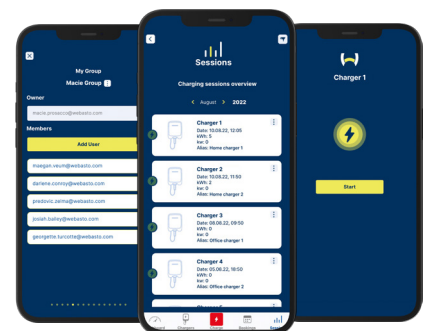
Webasto ChargeConnect is the perfect portal for the comprehensive management of several Webasto charging stations. In the clear, web-based user interface, you can view all charging data digitally 24/7 and configure and manage the charging infrastructure and its users with a mouse click.

## Webasto ChargeConnect App

The mobile companion

With the Webasto ChargeConnect App, your Webasto charging station is just a tap away. You can access all current and past charging sessions, start and stop them digitally, and authorize other users for a charging point directly via the mobile application. Simply download the app, register your charging station, and off you go.

Webasto ChargeConnect App	
Provider	Webasto Charging Systems inc.
Compatibility	Requires iOS version 12.0 or later Requires Android version 5.0 or later
Download	Google Play and App Store (for free)
Size	39 MB
Language	English, German, French (Other language versions will follow)



User Role	Description	Private Customer	Business Customer
Owner	Has full access to the features as a user	X	
Family and friends	Has permanent restricted access and can start and stop charging for one or more specific charging stations (displayed under 'shared').	X	
Admin	Comparable to the role of owner (private customer)		X
User	Comparable to the role of family and friends (private customer)		X
Guest	Has temporary and limited access even without a registered account and can start and stop charging processes for one or more specific charging stations.	X	X

# Webasto ChargeConnect

Simple and intuitive – all features at a glance

Category	Feature	Description	App	Portal
 <b>Display</b>	Charging sessions	Display details of the last charging session with status, time stamp, duration, charging quantity as well as graphic display and evaluation option of charging sessions with filtering by charging station and authorisation tag.	x	x
	Overview charging stations	Overview of all connected chargers, categorised by favourite, residential and commercial as well as shared charging stations.	x	x
	Logs	Logs contain information that the charging station sends to the backend. These logs can be viewed by the charging station users (except 'family and friends users' and 'guest users') to obtain detailed information about the activities and status of the charging stations.		x
	Alerts	Display of system information as status messages in the notification area with instructions on how to proceed.		x
 <b>Evaluation</b>	Dashboard	Display total consumption of the charging processes of all connected chargers with weekly and monthly overview.	x	x
	Data export	Data export in the formats *.csv, *.xlsx and *.pdf* (*.pdf only via app). The charging data can then be further processed with other applications to prepare for reimbursement application to employers or authorities.	x	x
 <b>Operation</b>	Registration	Initial registration of a Webasto ChargeConnect user with creation of a Webasto ChargeConnect account via the app. The account can then be used to access app and portal.	X	
	Starting and stopping	Start and end charging processes via app and web portal (Scan & Charge and Remote Starts with one click).	X	X
	Sharing a charging station	Share your own charging station with family or friends after inviting them into your ChargeConnect group.	X	X
	Site management of charging stations	Make your own charging stations accessible to employees at company sites.	X	X
	Set charging costs	Define tariffs for your groups or locations to keep track of your costs at all times.	X	X
	Reservation	Make your charging stations accessible only by reservation and thus manage an optimal usage of your charging stations.	X	X
	Restart charging station	Perform a restart of an owned charging station.	X	X
	Firmware Updates	Perform a firmware update of an owned charging station.	X	X
 <b>Configuration</b>	Configuration of user profile	The user can change the password, access the quick start-guide, the Terms of Use and Privacy Policy and delete the account.	x	
	Authentication management	Adding, editing and favouriting authentication tags (e.g. RFID tags) to start and end charging processes at the charging station. By assigning tags to users, the charging processes can then also be evaluated on a user-related basis.	x	x
	Adding a charging station	Add a charging station by scanning a QR code or entering it manually.	x	
 <b>Support</b>	Updates	Provision of updates with bug fixes, stability and performance improvements as well as functional enhancements (in case of the app through updates provided in the app stores).	x	x
	Quick start-guide	Get to know the essential functions of the app step by step.	x	

Webasto ChargeConnect is compatible with the Webasto Next, the Webasto Unite as well as the following Webasto Live part numbers: 5110360C, 5110361C, 5110263C, 5110359C